

CARPENTARIA LAND COUNCIL

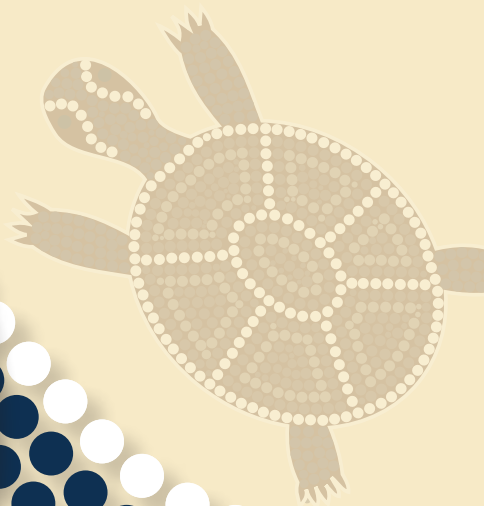


ABORIGINAL CORPORATION

# Social Investment Prospectus









# WHO WE ARE

Incorporated in 1984, CLCAC is the oldest native title organisation in Australia. The corporation represents the rights and interests of Traditional Owners in the southern Gulf of Carpentaria, with its membership drawn from the following nine Aboriginal language groups whose traditional lands and waters are located in the Gulf:

Kurtijar

Gangalidda

Yangkaal

Gkuthaarn

Kaiadilt

Waanyi

Kukatj

Lardil

Garawa

On 30 June 1994, CLCAC was recognised as the native title representative body under the Native Title Act for the Gulf of Carpentaria Region. The area represented by CLCAC encompasses land and waters from the Northern Territory border to east of Normanton, and includes the Wellesley Islands.

## WHAT WE DO

### NATIVE TITLE

In performing the role and functions of a native title representative body, we assist Traditional Owner groups in the Southern Gulf Region to pursue native title rights over their traditional lands and waters. This has resulted in successful determinations for the Waanyi, Gangalidda, Lardil, Yangkaal and Kaiadilt Peoples.

Much of the remaining land in the Gulf is subject to native title claims lodged with the assistance of the CLCAC.



## BEST PRACTICE LAND AND SEA MANAGEMENT

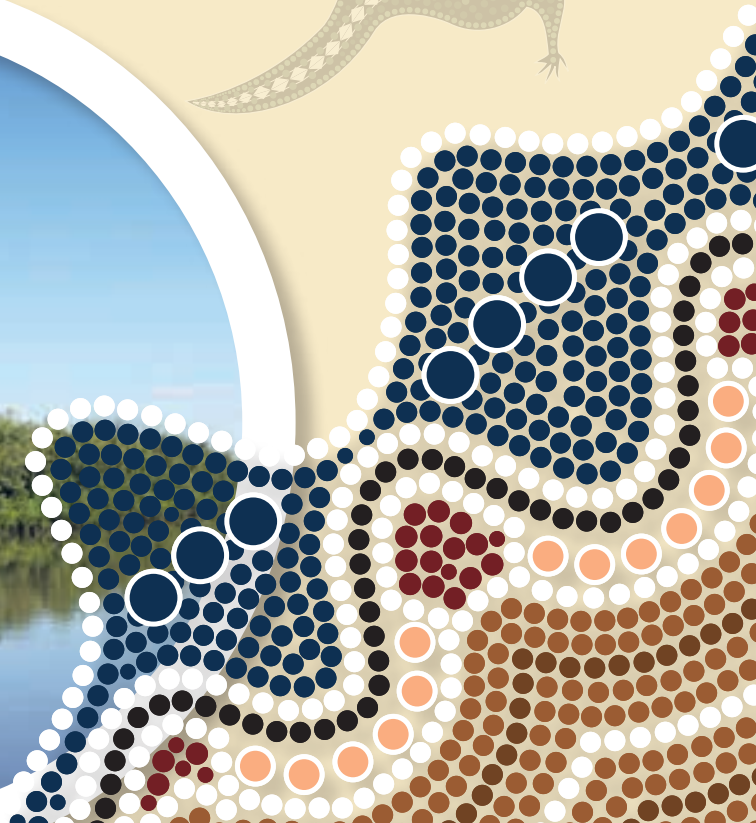
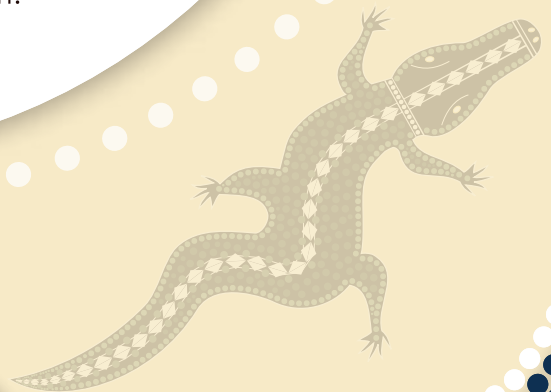
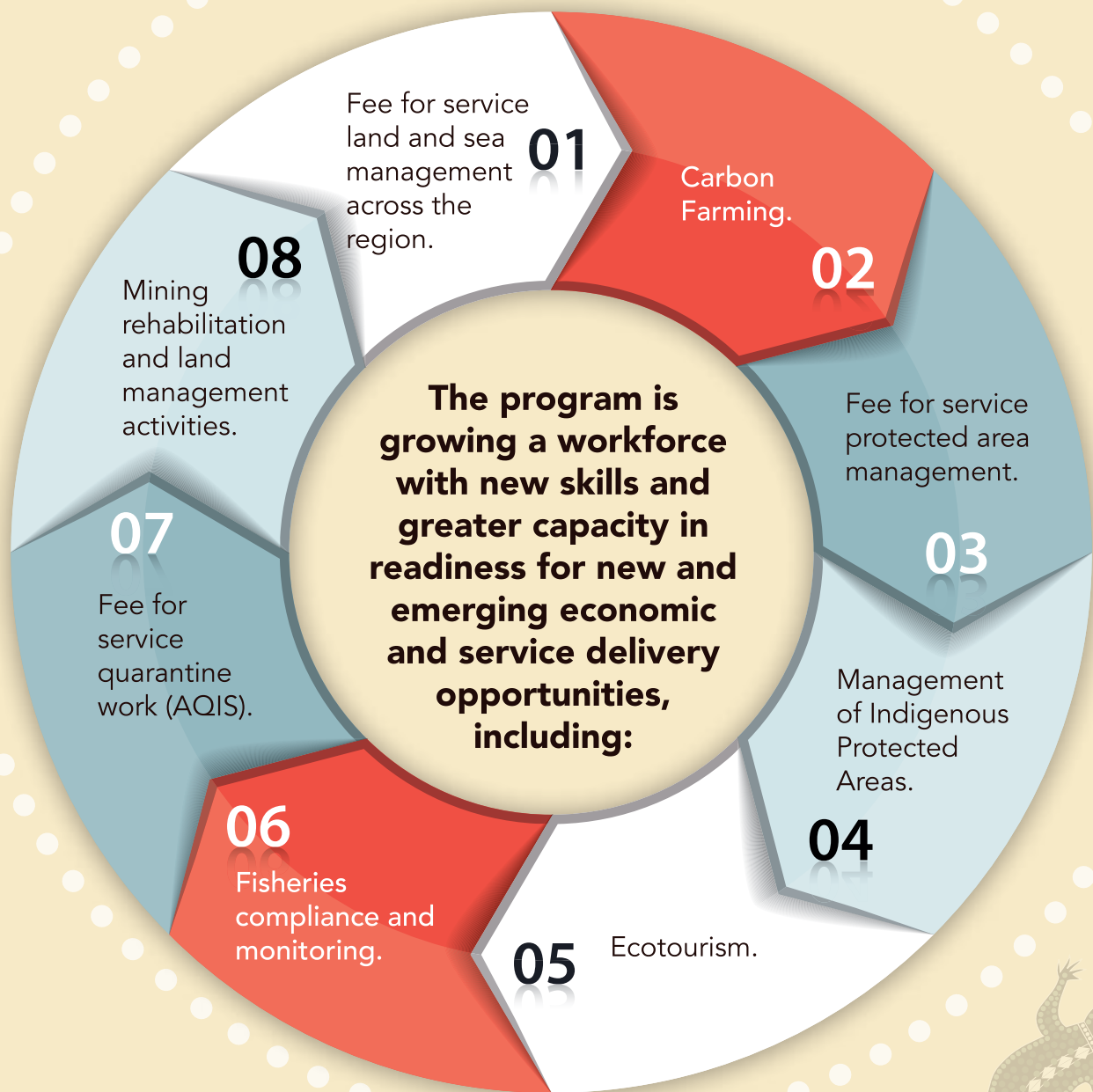
The spectacular natural environment of the Southern Gulf Region ranges from eucalyptus woodlands in inland areas through lowland coastal plains, pristine wild rivers and seasonal and permanent wetlands to the rich marine resources of the Gulf of Carpentaria. Extensive mangrove forests, vast salt pans, estuaries, beaches, rocky shores, large seagrass beds, reefs and other marine areas typify the landscape. The area is particularly significant for the extent and continuity of its wetlands and its importance as a rich breeding habitat for many waterbird and shorebird species, and encompasses rich hunting grounds and therefore many areas of high cultural significance to Traditional Owners.

In 2007 the CLCAC established a Land and Sea Ranger Program as an extension of its role as a native title service body. Current and prospective Aboriginal ownership of significant areas of land in the Gulf Region means that Traditional Owners have both the opportunity and responsibility to manage and protect their traditional lands. The Land and Sea Program undertakes management activities that enhance the protection and management of natural resources for the long-term benefit of Traditional Owners and communities. The program has been successful in the strategic management of weeds of national significance and the eradication of feral animals, including the culling of tens of thousands of feral pigs in the Normanton region in recent years.

Fire management is a key feature of the work undertaken annually by the Rangers. The Rangers utilise early season burns to prevent destructive late dry season fires, ensuring the protection of much of the Gulf mainland country and islands. Sea grass monitoring, ghost net disposal work and protection of sea turtle nesting sites enable the protection of critical marine resources. Erosion rehabilitation and monitoring is also carried out to ensure that fresh water is retained in the landscape and to prevent the destruction of wetlands and sea country.







# A NEW ERA – ECONOMIC DEVELOPMENT

In 2011 the CLCAC established a Business and Economic Development Program. The program builds on current initiatives to drive new economic development opportunities that will contribute to improved social and community development outcomes. Although there are a number of Indigenous owned business success stories in the region, Indigenous people and communities of the Gulf Region remain socially and economically disadvantaged.

Through our Business and Economic Development Program, CLCAC is identifying and pursuing opportunities for investment, resource development and other commercial opportunities that will benefit Traditional Owner groups and communities. An assessment of the four key sectors of Resources, Land Management, Tourism and Service Delivery has been completed to identify and prioritise potential economic development opportunities to pursue as well as to better understand the barriers to investment.



Building and establishing partnerships with industry, business and key stakeholders

is central to our economic

development strategy which is founded on the following key strategic actions:

- Fit for purpose economic opportunity and feasibility planning to identify and prioritise realistic economic development opportunities to be pursued and developed in a strategic and sustainable way;
- Growing a 'business ready' work force and supporting existing businesses to become more efficient and sustainable and better placed to take advantage of emerging opportunities;
- Developing an Indigenous Business Advisory and Support Service that employs Indigenous Business Mentors with a focus on getting people 'business ready';
- Developing an Indigenous focussed Business Incubation and Shared Resource facility;
- Working closely with Remote Jobs and Communities service providers to ensure training and development programs are well directed and focussed where it counts;
- Assisting potential new businesses with start-up planning;
- Taking advantage of emerging opportunities such as the carbon economy through the Federal Governments Indigenous Carbon Farming Initiative;
- Maximising economic development opportunities related to mining and exploration ventures such as joint venture operations;
- Developing new tourism products and experiences that will provide real employment and stimulate wider economic growth in the region; and
- Building relationships and alliances with industry, philanthropics and corporates to deliver mutually beneficial goals.





# WHAT WE WILL DELIVER FOR COUNTRY, TRADITIONAL OWNERS, KEY CLIENTS AND OUR PARTNERS

## CAPACITY

### Native Title Services

## OPPORTUNITY

### *Realise the economic potential of native title.*

Secure positive native title determinations

Negotiate exploration and mining agreements with real community and economic benefits

Establish appropriate legal entities to hold native title and manage ancillary economic opportunities

Support Prescribed Body Corporates to achieve their goals.

### Land and Sea Rangers

### *Deliver best practice land and sea management outcomes for the Southern Gulf Region.*

Deliver best practice land and sea management programs, including fee for service arrangements.

Deliver Carbon Farming outcomes for key clients.

Build our Human Capital and grow a 'job ready' workforce.

Advocate for sustainable development across the region.

### Business and Economic Development

### *Facilitate delivery of sustainable and viable economic development opportunities for Traditional Owners of the Southern Gulf Region.*

Undertake fit for purpose economic opportunity and feasibility planning and assessments.

Aggressively pursue development of prioritised and feasible options.

Provide effective business support services to new and existing businesses through the development of innovative and culturally appropriate support services such as an Indigenous Business Incubator and Indigenous Small Business Advisory Service.

Provide leveraging, marketing and cultural development opportunities for our key partners.

Maximising opportunities presented through tourism by providing new experiences that will stimulate local economic growth in the Southern Gulf Region.



# OUR CURRENT PARTNERS AND SUPPORTERS

Department of Environment and Heritage Protection (QLD)

Department of Prime Minister and Cabinet-Indigenous Affairs

Department of Industry

Department of Environment

Department of Agriculture, Forestry and Fisheries (QLD)  
(includes biosecurity)

Department of National Parks, Recreation,  
Sport and Racing

Department of Community Safety

Burke Shire

Carpentaria Shire

Southern Gulf Catchment

Northern Gulf Natural  
Resources Group

Morr Morr Pastoral Company

## FOR FURTHER INFORMATION

Contact:

CEO

Level 1, 104 Mulgrave Road

PO Box 6662

Cairns QLD 4870

T: (07) 4041 3833

E: [reception@clcac.com.au](mailto:reception@clcac.com.au)

